

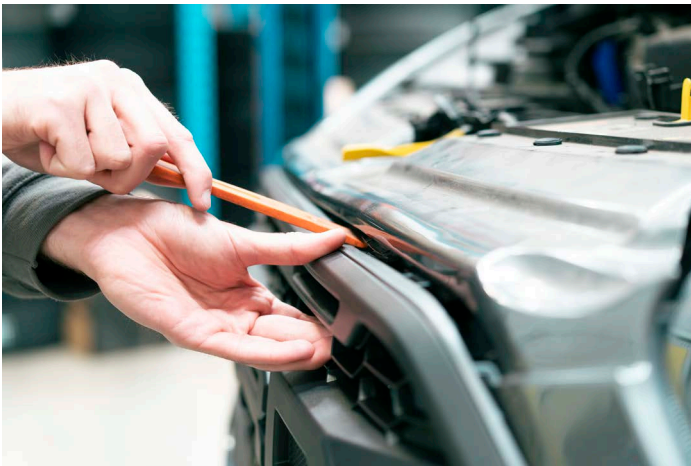


## STEP 1\_

Removal of the Transit Custom front grille is relatively simple, and requires only very basic tools. We highly recommend a range of strong trim removal tools, and possibly some masking tape to protect your vehicle's paintwork.

## STEP 2\_

Use your largest and widest trim removal tool and insert carefully into the gap between the Ford grille and the aperture of the bumper. Now lever the tool upward as to ease that portion of the grille away from the bumper.



## STEP 3\_

Often-time, removal of such components can pose difficulties, and demand quite a lot of force and manipulation. This is entirely normal and is required to remove the grille from the bumper. This grille is held in by a number of clips around the hole perimeter, and is best tackled one clip at a time to begin with. Once enough clips have been prised away, the whole grille can be pulled on to remove.

## STEP 4\_

Once you're happy with the progress along the top of the grille, it's best to move around to the sides and tackle the tricky corner clips. These clips are the most likely to break in the removal process but, if you take your time and use only moderate force, they can be removed intact in case you ever wish to reinstall or sell the grille.

**CONTINUED...**



## STEP 5\_

With the majority of the upper and side clips released, the grille almost falls away from the bumper. It's advised that the top is removed first, while pulling away at the bottom to completely remove the unit.

## STEP 6\_

Above is a close up to show the removal of the lower clips. They're different in design but should come away fairly easily. The above image also serves to show the first step in reinstalling your replacement grille.



## STEP 7\_

All of the clips are positioned the same on the replacement grille, and all Ford Transit Custom grilles for that matter. As seen in the previous step, begin by aligning the grille and ensuring all the bottom row clips sit within the corresponding holes on the bumper. Once aligned, begin to press firmly as to seat the clips along the bottom.

## STEP 8\_

Continue working your way up and around the grille, starting with one side, followed by the opposite side. Take care not to force any areas too much, as resistance may suggest the clips aren't aligned quite right. If this occurs, ensure the grille is centred before continuing and adjust if necessary.

**CONTINUED...**



## STEP 9\_

The final step in installation is simply ensuring all clips are fully seated. You'll hear a definite click as all clips are pressed into place. It's best to run your hand around the perimeter a couple of times to ensure none are missed.

## RESULT\_

With the Genuine Ford Grille installed, you've successfully given your vehicle the incredibly aggressive look of the Custom 'Trail'.

## INCLUDED IN THE KIT\_

